



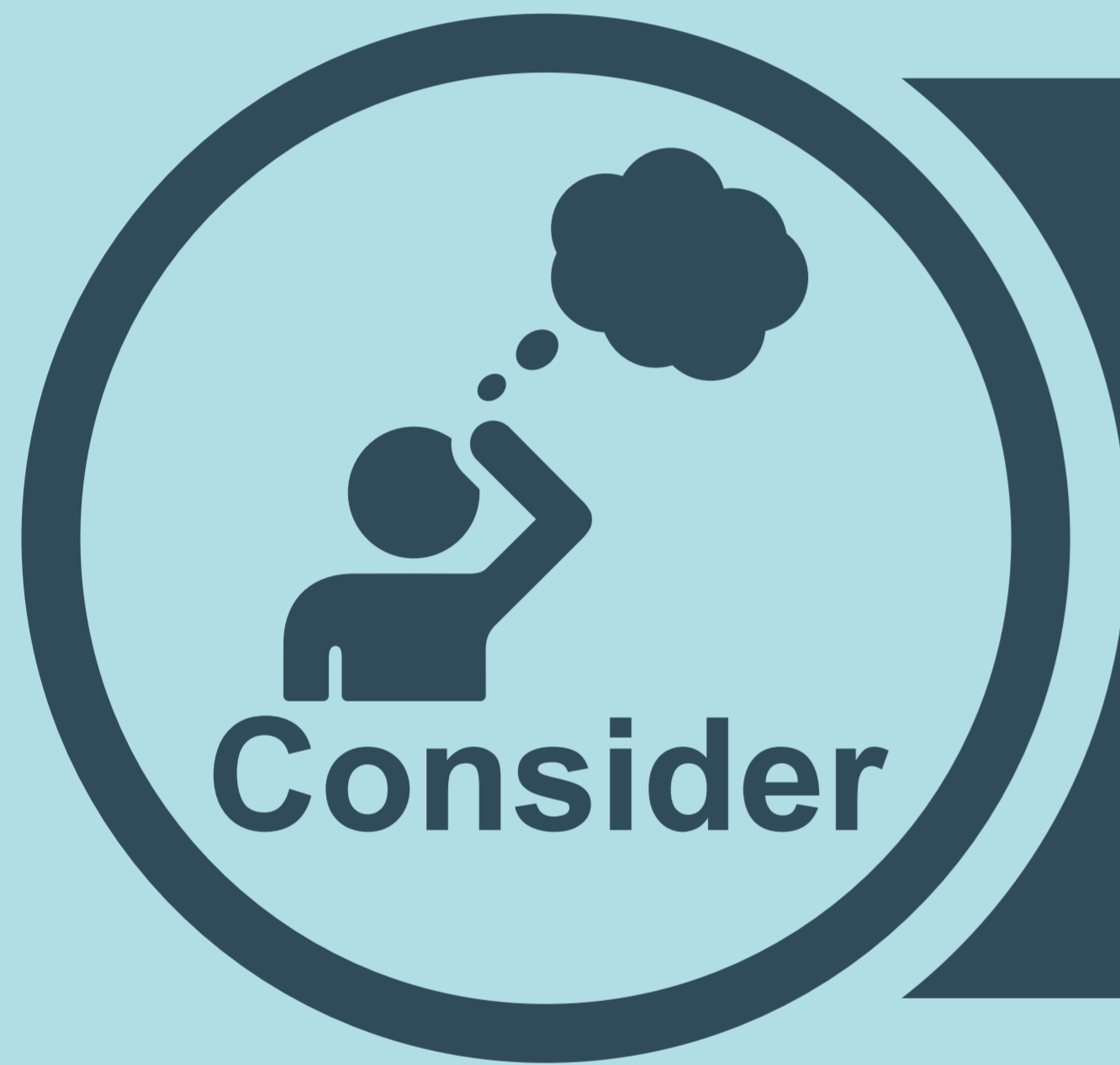
Township of  
**SEVERN**



# WELCOME

Ward Boundary Review

## Township of Severn Ward Boundary Review



Consider

Where should ward  
boundaries be  
drawn and why?

### Process



Review  
Current  
System



Think about  
the Guiding  
Principles



What is the  
Ideal  
Outcome?



Provide  
Feedback at  
the Survey

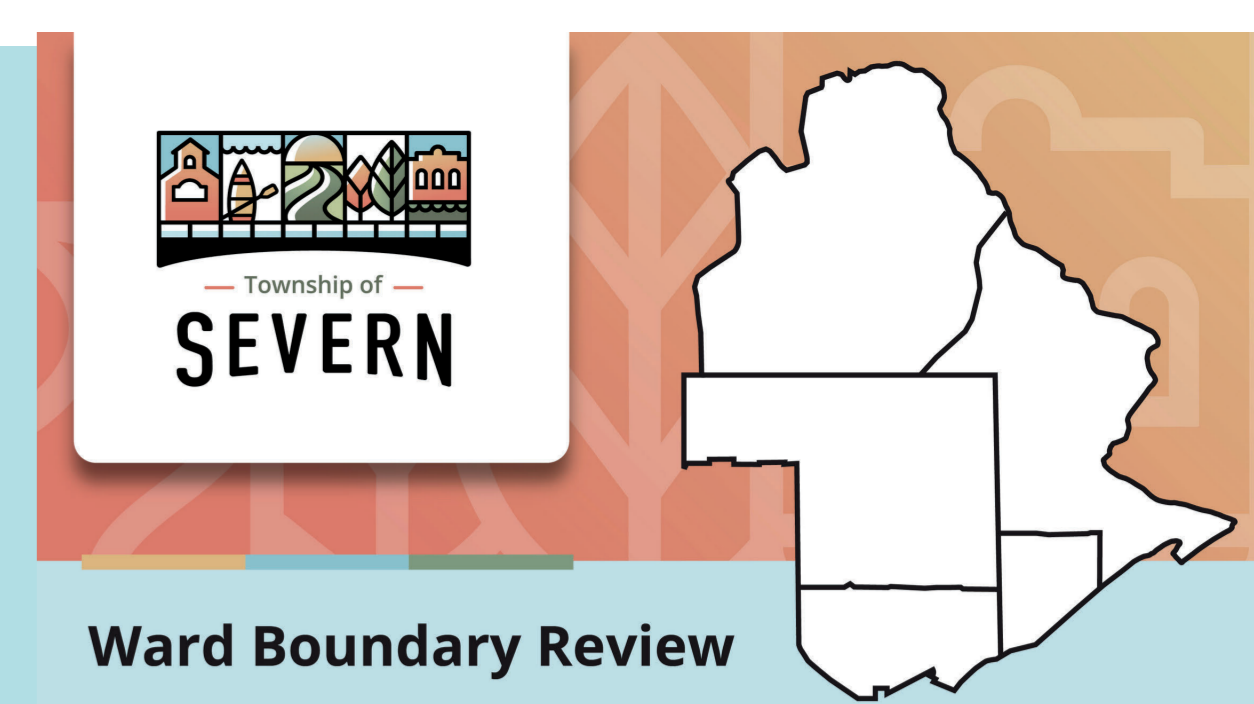
Please provide  
your feedback:



Watson  
& Associates  
ECONOMISTS LTD.

# Township of Severn 2024 Ward Boundary Review

www.severn.ca/wbr



## Public Information Session Ward Boundary Review



We want to hear from you!








For more information, visit  
<https://www.severn.ca/wbr>

## Project Overview and Objectives

**The Township of Severn has retained Watson & Associates Economists Ltd. and Dr. Robert J. Williams to undertake the 2024 Ward Boundary Review.**

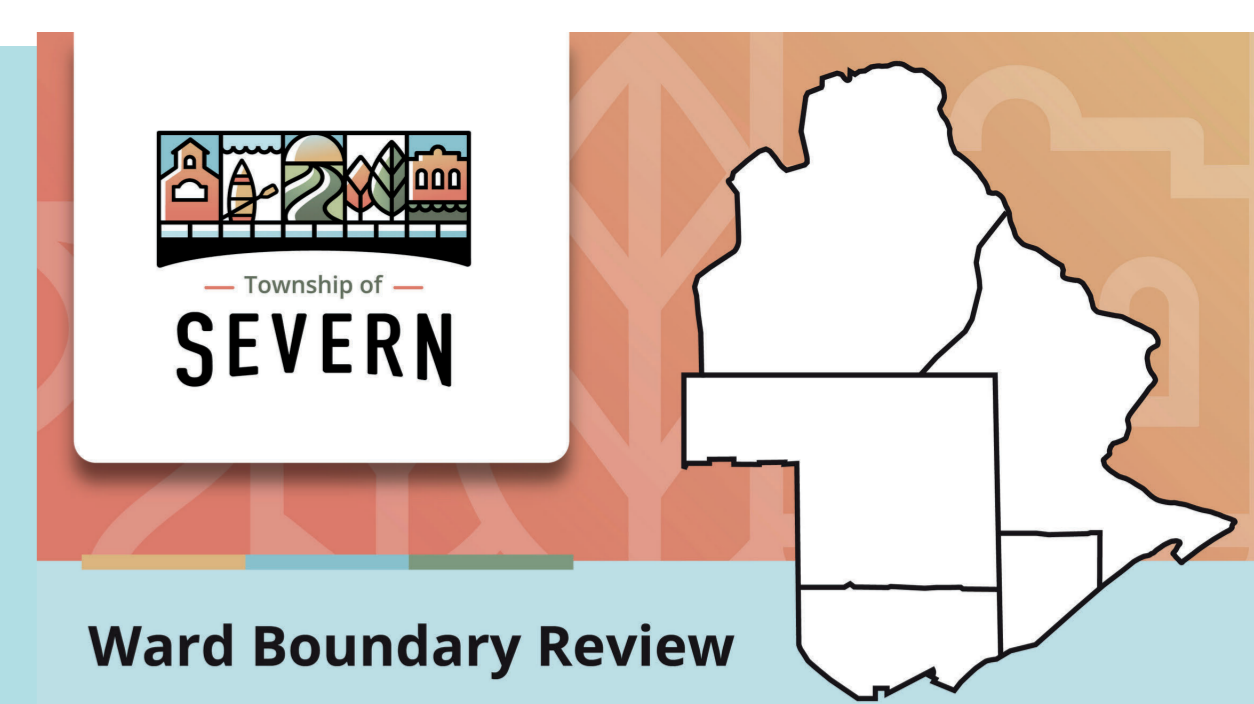
**The primary purpose of the review is to prepare Township Council to make decisions about whether to maintain the existing ward structure or to adopt an alternative arrangement.**

### Key Objectives Include:

-  Develop a clear understanding of the present ward system, including its origins and operations as a system of representation;
-  Evaluate the strengths and weaknesses of the present ward system on the basis of identified guiding principles;
-  Conduct an appropriate consultation process to ensure community support for the review and its outcome;
-  Identify plausible modifications to the present ward structure; and
-  Deliver a report that will set out recommended alternative ward boundaries to ensure effective and equitable electoral arrangements for the Township of Severn, based on the principles identified.

# Township of Severn 2024 Ward Boundary Review

www.severn.ca/wbr



## Existing Council Structure

### Mayor

#### Head of Council



Head of Local Council  
and serves on Simcoe  
County Council

*Elected At-Large*

+

### Deputy Mayor



Serves on Local Council  
and Simcoe County  
Council

*Elected At-Large*

+

### Ward Councillors

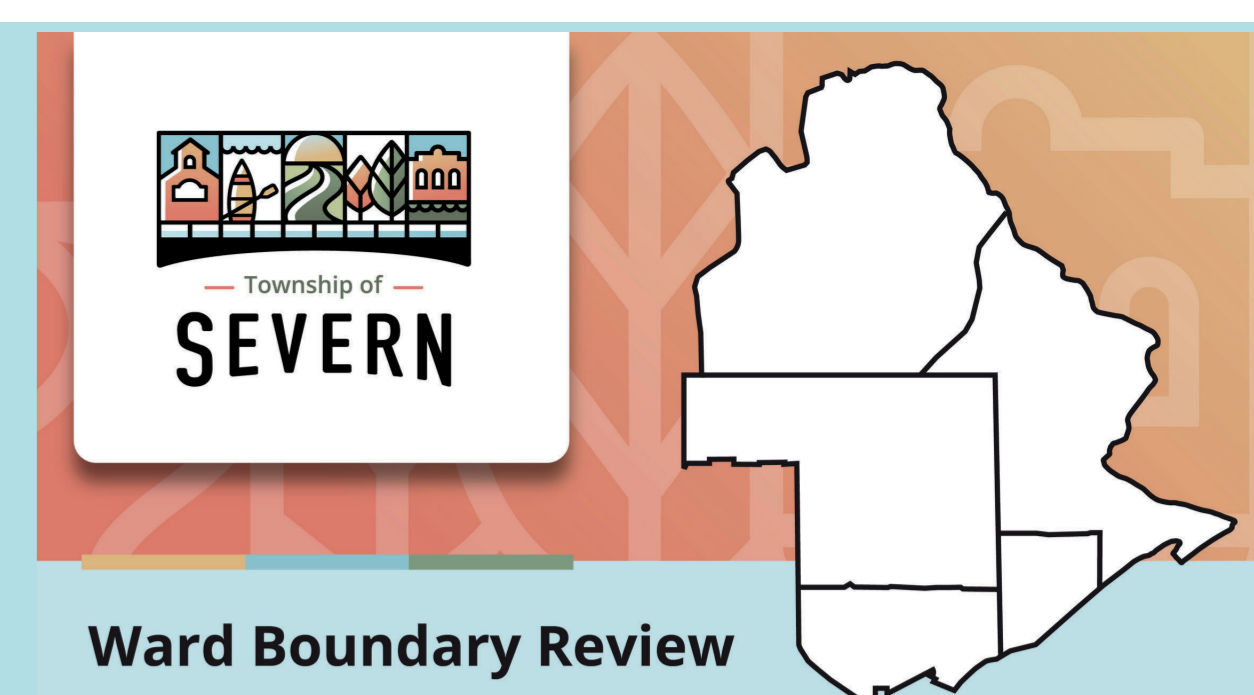


One councillor elected  
per ward (x5)

*Elected in Wards*

# Township of Severn 2024 Ward Boundary Review

www.severn.ca/wbr



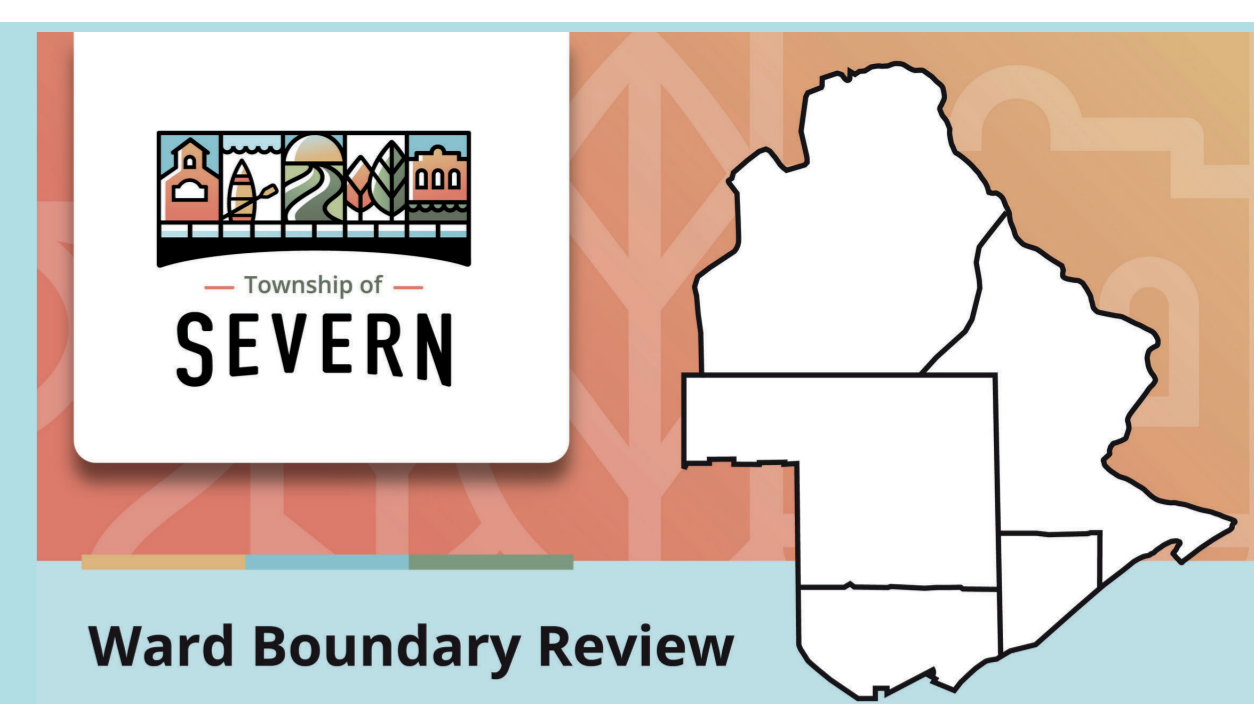
## Population per Council Size Comparison

Municipality	2021 Census Population	Area (sq. km)	Council Members*	Persons per Member	Wards/ At-Large
Township of Adjala-Tosorontio	10,989	371.53	7	1,570	Wards
Town of Bradford West Gwillimbury	42,880	200.68	9	4,764	Wards
Township of Clearview	14,814	556.37	9	1,646	Wards
Town of Collingwood	24,811	33.15	9	2,757	At-Large
Township of Essa	22,970	279.92	5	4,594	Wards
Town of Innisfil	43,326	262.39	9	4,814	Wards
Town of Midland	17,817	35.33	9	1,980	At-Large
Town of New Tecumseth	43,948	273.87	10	4,395	Wards
Township of Oro-Medonte	23,017	585.42	7	3,288	Wards
Town of Penetanguishene	10,077	25.42	9	1,120	At-Large
Township of Ramara	10,377	414.94	7	1,482	Wards
<b>Township of Severn</b>	<b>14,576</b>	<b>523.06</b>	<b>7</b>	<b>2,082</b>	<b>Wards</b>
Township of Springwater	21,701	535.85	7	3,100	Wards
Township of Tay	11,091	137.86	7	1,584	Wards
Township of Tiny	12,966	335.05	5	2,593	At-Large
Town of Wasaga Beach	24,862	57.42	7	3,552	At-Large
<b>Average</b>	<b>21,889</b>	<b>289</b>	<b>8</b>	<b>2,833</b>	<b>-</b>

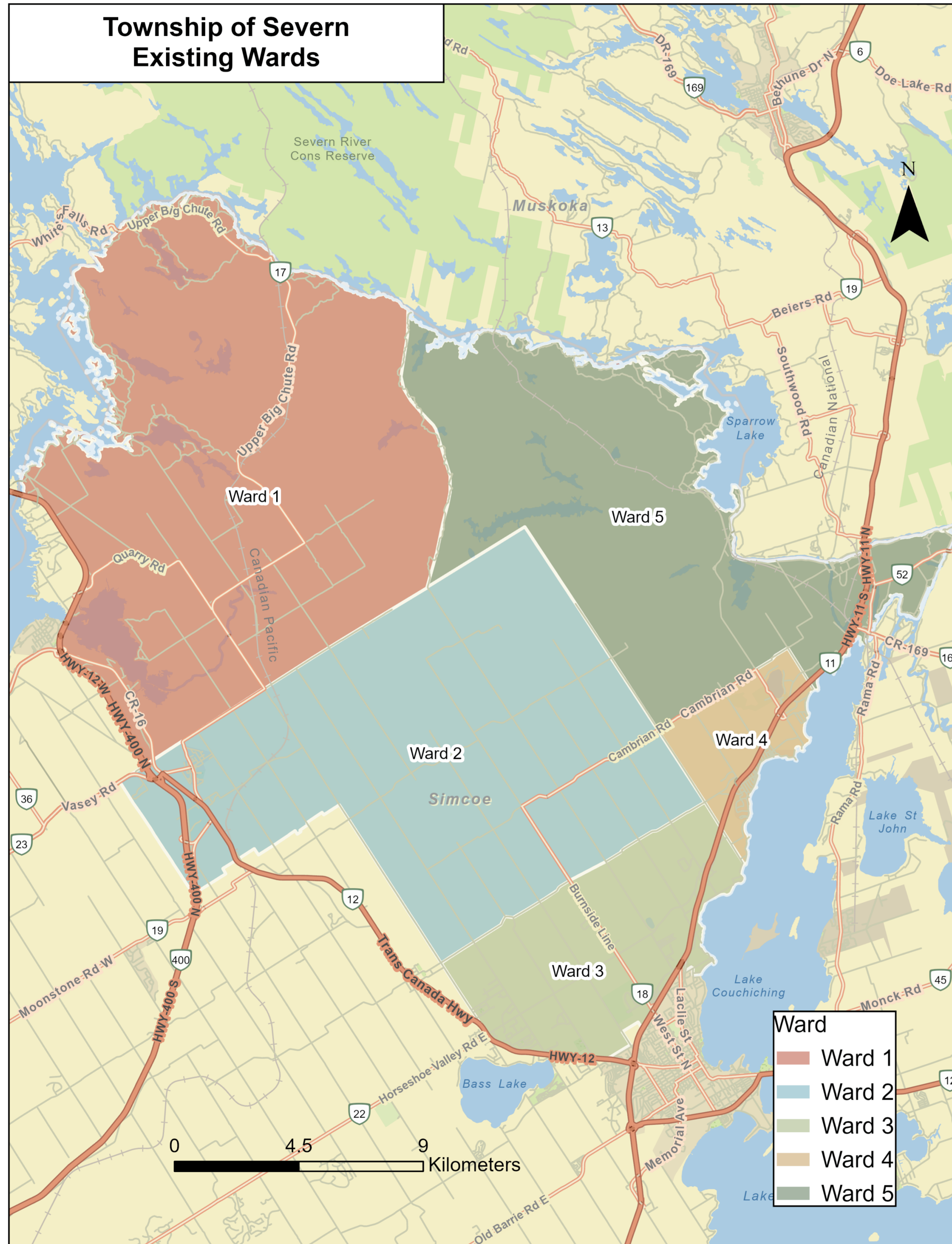
Council Members include head of Council.

# Township of Severn 2024 Ward Boundary Review

www.severn.ca/wbr



Ward Boundary Review



## Existing Ward Configuration

### 2021 Population by Ward

Ward	Area (SqKm)	2021		
		Population	Population Variance	Optimal Range
Ward 1	198.6	1,798	0.62	OR-
Ward 2	161.8	3,343	1.15	O+
Ward 3	53.2	4,542	1.56	OR+
Ward 4	19.4	2,894	0.99	O
Ward 5	130.0	1,999	0.69	OR-
<b>Total/Average</b>	<b>563.0</b>	<b>14,576</b>	<b>2,915</b>	


Note: Population does not include seasonal populations.

O	±5% of the Optimal (Average) Population
O-	±5%-25% of the Optimal (Average) Population
OR-	>±25% of the Optimal (Average) Population



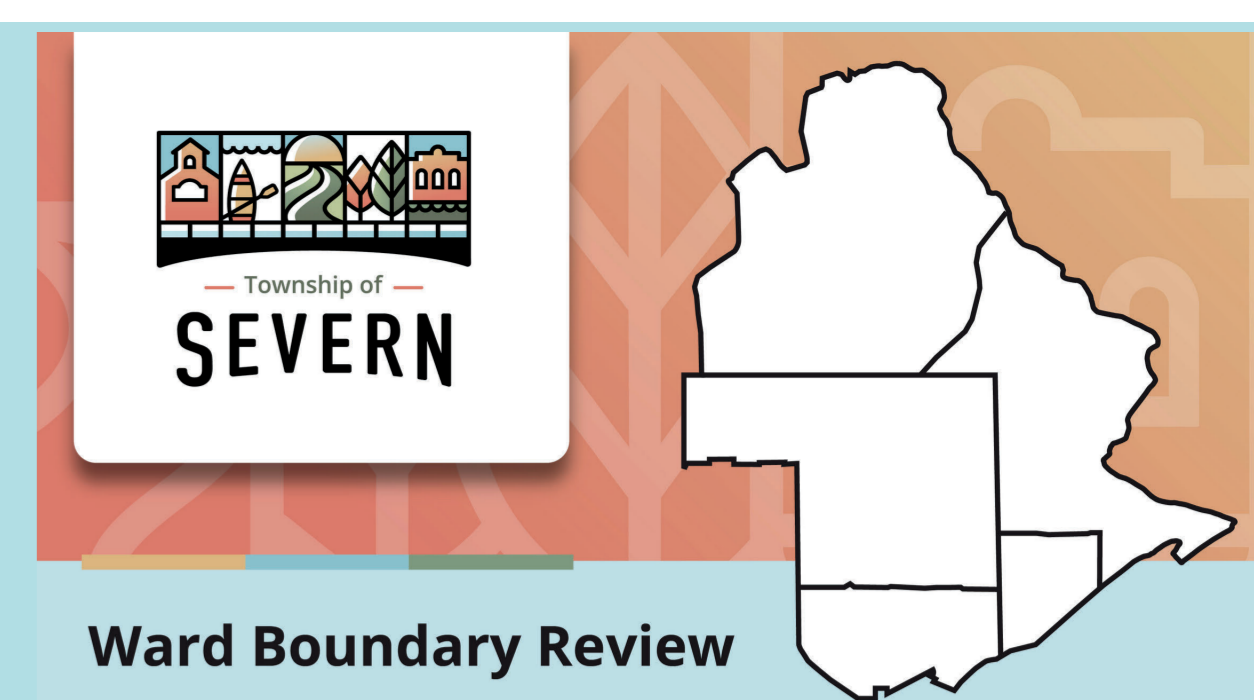
## Guiding Principles

The following principles will be used to evaluate the existing ward structure and subsequent alternative options:

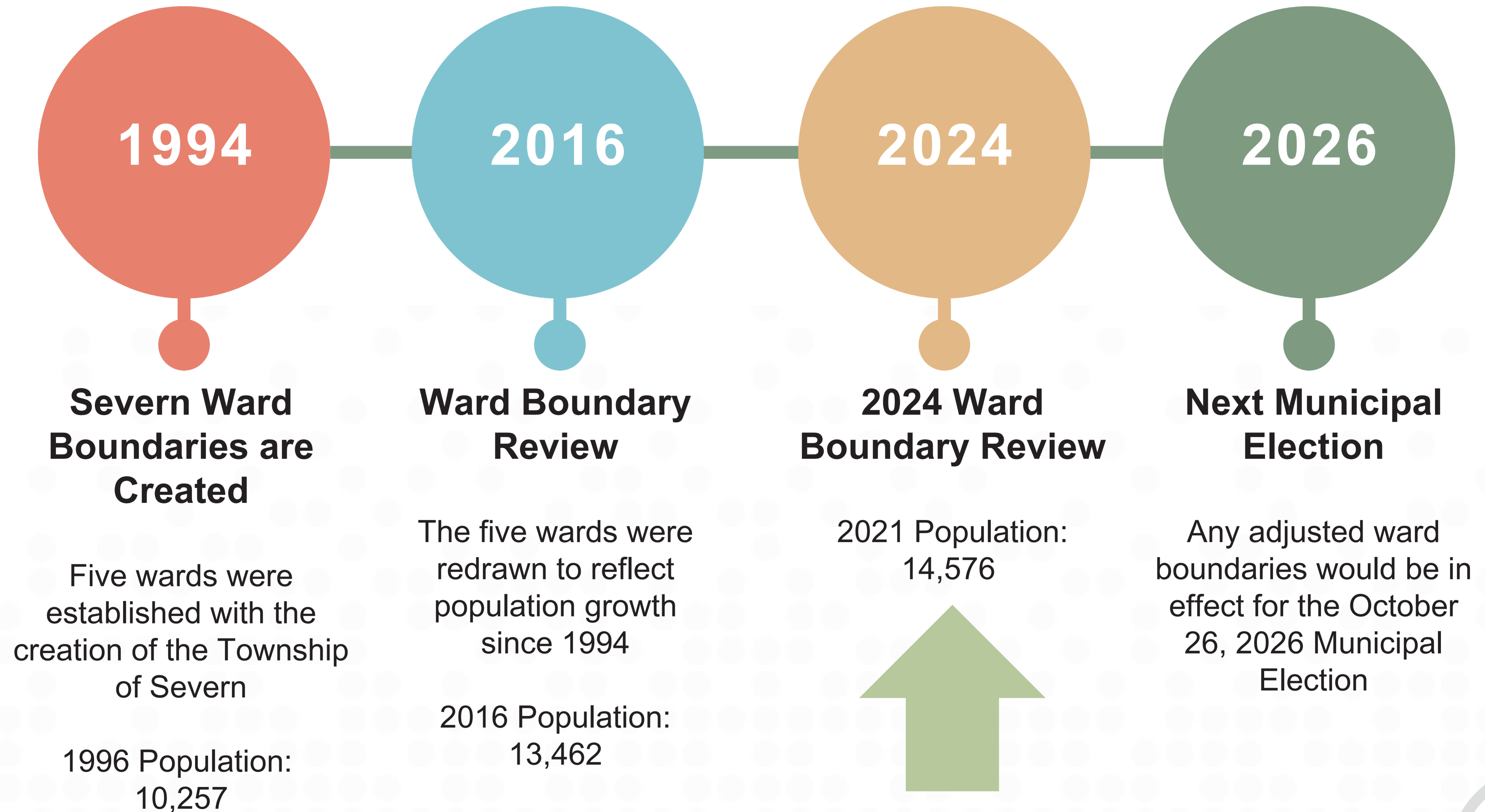
-  **REPRESENTATION BY POPULATION**  
Ensuring electors are comparatively represented on Council, giving an equal voice, which is understood to be within  $\pm 25\%$  maximum deviation from the average ward population.
-  **CONSIDERATION OF FUTURE POPULATION TRENDS**  
Including changes in population growth and development, aging communities, etc. (Population and Electoral Trends)
-  **PHYSICAL AND NATURAL BOUNDARIES**  
Including changing the way in which manmade and natural features such as highways, railways, river valleys, and farmland shape the community. (Geographic and Topographic Features)
-  **COMMUNITIES OF INTEREST**  
Including settlement patterns and existing historical communities in the context of the broader municipality. (Communities or Diversities of Interests)
-  **EFFECTIVE REPRESENTATION**  
The four articulated principles contribute to achieving the over-arching principle of effective representation.

# Township of Severn 2024 Ward Boundary Review

www.severn.ca/wbr



## Past and Present





## Legislative Framework

### Ontario's *Municipal Act, 2001* authorizes a local municipality to:

- define the size of the Council
- determine how Council (other than the Mayor) will be elected
- “divide or re-divide the municipality into wards or dissolve the existing wards”

### No stipulated schedule, standardized process or established criteria exist for electoral reviews in Ontario

- Each municipality must set its own terms, parameters, guiding principles, etc.
- A review is typically framed by established procedures and principles applied in several Ontario municipalities (and by the Ontario Land Tribunal (OLT) and judicial rulings on representation)